

August 2022

### Description

Moore Industries' Fuse Protected USB Communication Cable provides the interface between a PC USB port and any of Moore Industries' PC-programmable interface instruments. In particular, it provides protection when programming Moore Industries' intrinsically safe products, as required by Ed6.0 of the IEC60079-11 standards.

**WARNING:**

Moore Industries' USB Communication Cable should be used only in non-isolated applications. It is not for use in hazardous environments.

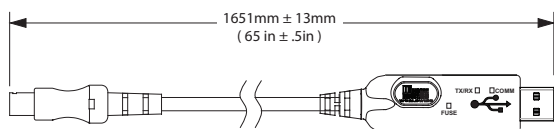
**Important:**

The configuration programs for the following Moore Industries products are limited to COM ports 1, 2, 3 or 4: CPA, CPT, FDY, MIM, PSD, SDY, SIY, SPD, T2X, TDY, TDZ2, THZ2, TMZ, TRZ and TRY. Please use the USB Communication Cable Utility to assign the USB cable to a COM port in this range. All other configuration programs will work with any COM port assignment, provided you have a recent version of the program (December 2008 or later.) You can find the configuration programs on the Moore Industries' Interface Solution Configuration Tools and Installation Manuals CD or download the latest version from the Moore Industries website at [www.miinet.com](http://www.miinet.com).

### Fuse Protected USB Communication Cable Configuration

Configuring the Moore Industries' USB Communication Cable is simple. Begin by installing the Moore Industries USB Communication Cable Utility on your computer. You can find the utility on the Moore Industries' Interface Solution Configuration Tools and Installation Manuals CD or download the latest version from the Moore Industries web site at: [www.miinet.com](http://www.miinet.com). For instructions on installing the utility see section "Installing the USB Communication Cable Utility".

Figure 1. Moore Industries' USB Communications Cable dimensions



### USB Cable Status Information

Moore Industries' Fuse protected USB Communication Cable includes three LEDs which provide information on status and data transmission. Please refer to Figure 2 for location of the LEDs. The FUSE LED indicates whether the fuse protection is working. IF THE FUSE INDICATOR IS NOT GREEN YOUR USB CABLE WILL NOT WORK. For the TX/RX and COMM LEDs, there are two (2) colors that are used, Red and Green, or both in different combinations. Refer to Tables 1 and 2 for details.

Figure 2. LED location for Moore Industries' USB Communication Cable



Table 1. TX/RX LED Behavior

Color	Definition
Green	A byte was transmitted
Red	A byte was received

Table 2. COMM LED Behavior

Color	Connection Status	Definition
Green	N/A*	Device not connected or 2-Wire device (connection) detected
Red	N/A*	Device not connected or 4-Wire device (connection) detected
Green/Flashing Red	Connected	Odd Parity is set** 2-Wire device (connection) detected
Red/Flashing Green	Connected	Odd Parity is set** 4-Wire device (connection) detected

\*When the USB cable is not connected to a device the COMM LED may be red or green. \*\*Odd Parity setting is only applicable to CPA, CPT, TRY, TRX, SIY, T2X, SDY, and TDY models. Parity must be reset to Auto to function correctly with other devices. (Refer to Section D on the next page)

**Note:**

Install the **USB Communication Cable Utility** before plugging in the USB cable. This will insure that the correct driver is installed, and all features will function correctly.

### Installing the USB Communication Cable Utility

Refer to Table 3 for the equipment needed.

1. Insert the **Moore Industries' Interface Solution PC Configuration Software** CD into the CD drive of the PC. Access the CD and open the "**USB Communications Cable Utility Software**" folder.
2. Double-click the installation program located in the folder. Follow the prompts to correctly install the program.
3. If you receive a prompt indicating that you do not have administrative rights to install the drivers, please contact your IT department to gain administrative access and install the drivers.
4. Once installation is complete, plug in the USB Communication Cable to continue.

**Note:**

If USB cable is plugged in prior to the steps shown above, the Hardware Wizard prompt will appear. Cancel this prompt, and unplug the USB cable and follow steps 1-4 to install USB driver.

Once the configuration software is installed on the PC, the Moore Industries' Communication Cable Utility can be run to configure the Moore Industries' USB Communication Cable.

Table 3. Equipment for USB Communication Cable Installation

Device	Specification
<b>Personal Computer</b>	Microsoft Windows based PC; 16MB free RAM; 20MB free disk space on hard-disk drive; Microsoft Windows 7 or 10; an available USB port.
<b>Software CD</b>	Moore Industries' Interface Solution Configuration Tools and Installation Manuals CD part number 750-75E05-01
<b>Fuse Protected USB Cable</b>	Moore Industries' part number 804-030-26

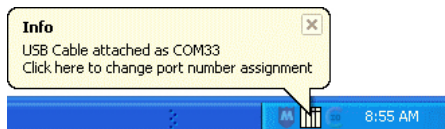
# Fuse Protected USB Cable

Communication Cable for Moore Industries  
PC-Programmable Instruments

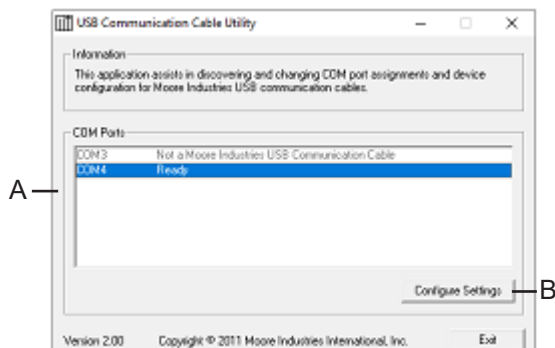
## USB Communication Cable Utility Configuration Summary

After the software is installed, the utility will startup minimized when Windows starts. The utility is intended to be resident in the tray area (located at the lower right corner of screen), providing notification of cable connections. Connect the USB Communication Cable to the PC's USB port. The following instructions will guide you through the configuration using the USB Communication Cable Utility:

1. To open simply double-click Moore Industries' icon in the tray area or go to **Start Menu/All Programs/Moore Industries/USB Communication Cable Utility** and click to open the utility.  
Alternatively, the pop-up shown below will be displayed when you insert your USB cable in to the USB port, if USB communication utility is running. This pop-up balloon will display the COM port which has been assigned to the USB cable. Double click the balloon to go directly to COM port settings (step 3).

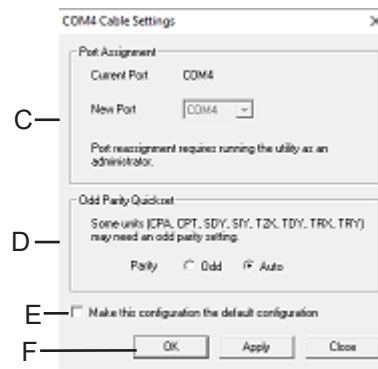


2. Below is the main screen of the USB Communication Cable Utility.



- Section A:** Lists all available COM ports, and shows which port has been assigned to your USB cable by showing the COM port assignment and status of your USB cable. Unavailable ports are shown in gray.
- Section B:** The **Configure Settings** button allows the user to change and configure the COM port which the USB cable is assigned to. This button is available only when the USB cable is connected to the PC.

3. To edit the USB COM port, highlight the assigned COM port and click the **Configure Settings** button. This will prompt the screen shown below.



- Section C:** The COM Port Selection has a drop-down which lists the possible COM port assignments. The user can assign the USB to any port from this list. See Note below if Windows has assigned a COM port with a number greater than 16.
- Section D:** The Odd Parity Quickset section is used for units which need an odd parity setting (i.e. CPA/CPT, TRY/TRX/SIY/T2X/SDY/TDY). User can set parity to Odd or Auto.
- Section E:** The configuration of the USB cable is reset to default values each time the USB cable is plugged into the PC. Checking this box will make the configuration the new default configuration used when the USB cable is plugged into the PC.
- Section F:** The OK button applies the new configuration and closes the dialog window. The Apply button applies the new configuration and leaves the dialog window open. The Close button closes the dialog window without altering the USB cable configuration.

### Note:

Windows may assign a COM port outside the range of 1 to 16 (e.g. 247), this does not signify that all COM ports between COM1 and the assigned COM port are in use. The USB Communication Utility can be used to re-assign the USB cable to a COM port within the range of 1 to 16

Specifications and information subject to change without notice.



United States • info@miinet.com  
Tel: (818) 894-7111 • FAX: (818) 891-2816  
Australia • sales@mooreind.com.au  
Tel: (02) 8536-7200 • FAX: (02) 9525-7296

Demand Moore Reliability

www.miinet.com

BeNeLux • info@mooreind.eu  
Tel: 03/448.10.18 • FAX: 03/440.17.97

China • sales@mooreind.sh.cn  
Tel: 86-21-62491499 • FAX: 86-21-62490635  
United Kingdom • sales@mooreind.com  
Tel: 01293 514488 • FAX: 01293 536852